

Water Operator Report Jan 2021

Prepared by: Dave Shepherd



Water consumption

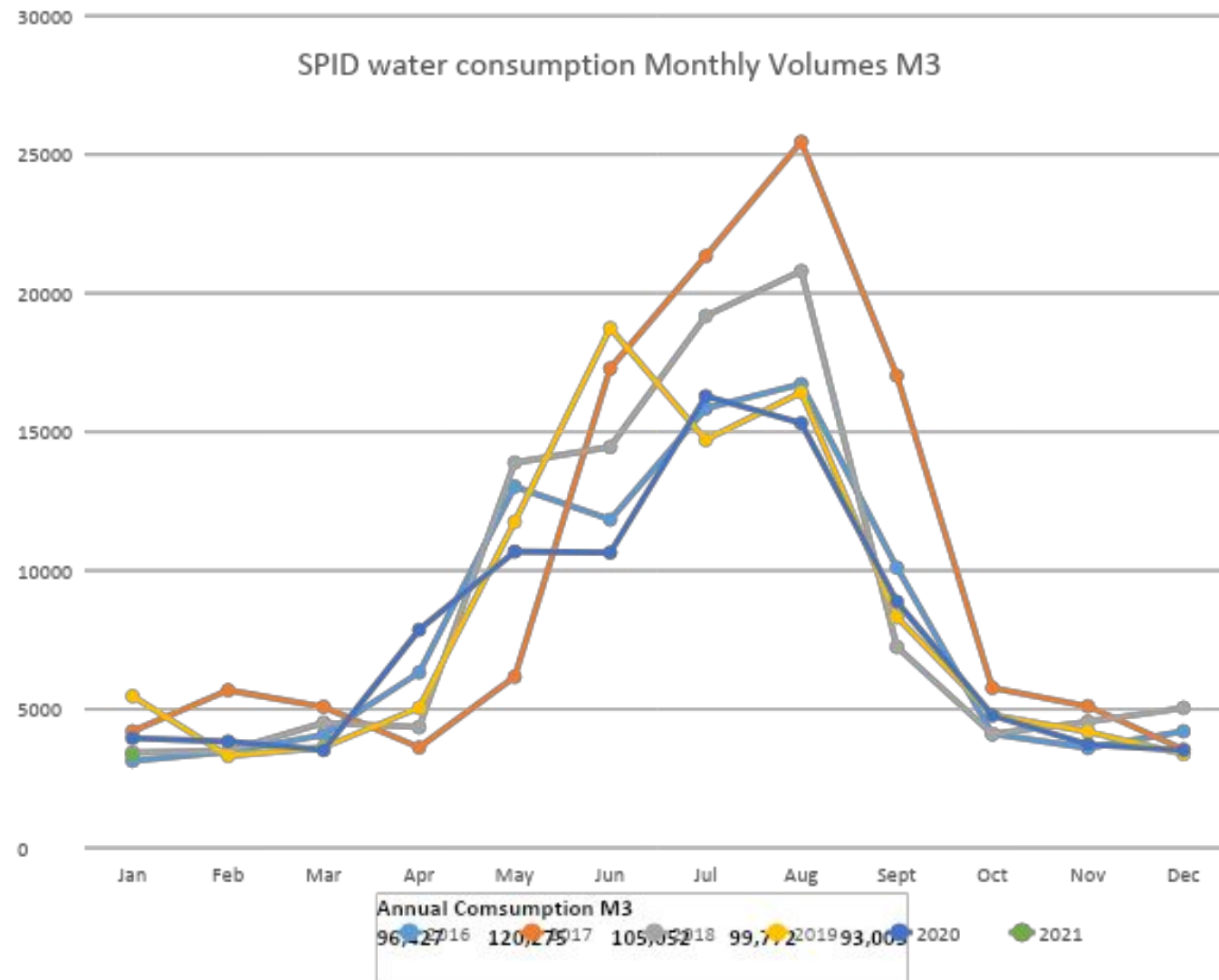
Monthly Consumption	3368 M ³	29	116.14 M ³	Daily Average
Previous year 2019-12	3955 M ³	28	141.25 M ³	Daily Average
			-17.78%	
Vol Well #1 since 19 Jan 2019	121.50 M ³			
Max Flow for month	1312.1 L/Min	Min Flow for month	0 L/Min (leak rate)	
Time and Date	21/01/2021 08:49		multiple occasions	early morning
Pump hours	# 2 690	# 3 0	#4 4	
Previous month hrs	669	1	4	

Samples

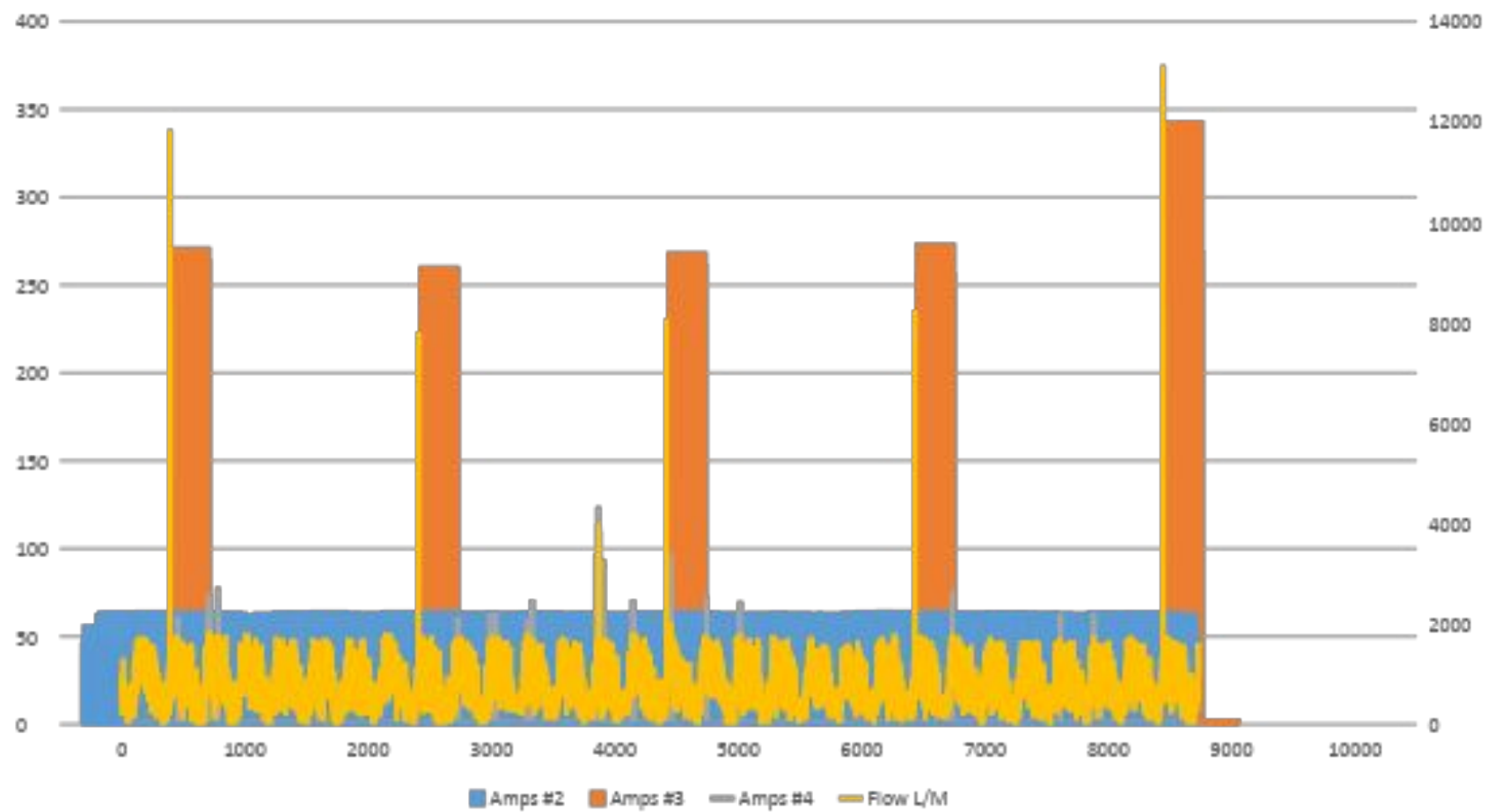
Activity	Date	Location	Sample type	Result	
Monthly	11/01/2021	7941 Park	Drinking water	✓	Sent to VIHA
Sample /testing		7588 Ships Pt.	Drinking water	✓	
		7576 Tozer	Drinking water	✓	
		Well 2	Raw	✓	
		Well 3	Raw	✓	
		Well 4	Raw	✓	

Operations/Maintenance

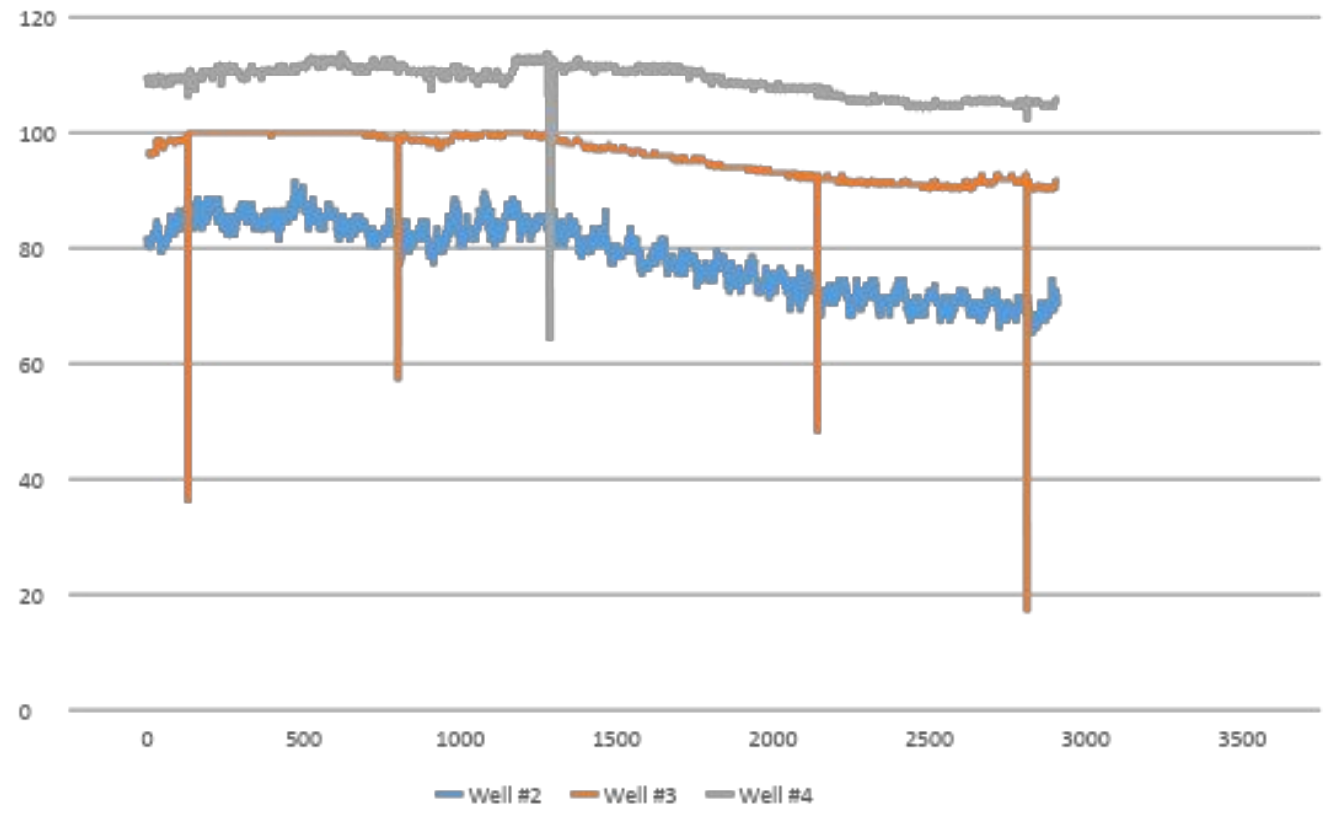
	Weekly Meter readings, CL residuals ind flushing station, run pump 1 collect well levels data
	Monthly Data/report, replace CL membrane, VIHA samples add & order chlorine as needed
	attend WTC and SPID meetings
01/01/2021	Call out low CL (low flow low mixing NFF)
07/01/2021	Switch Chlorine pump operation #1 off. #2 on check output and for leaks
09/01/2021	Flushing station sample pull cable broke, remove mechanism and repair with new crimp
	Create Web page folder on Google Drive share with Bob T
	Inspect drainage issue re owner 7821 SPR spoke to owner and BT will review in spring
10/01/2021	End of 2020 inventory
11/01/2021	Spoke to Ron FLINRO re complaint re Flushing station discharge near conservation area Once he was informed that we are using de chlorination tablets and determined this is industry best practice he seemed satisfied. He asked for discharge residuals which I'm now doing weekly
14/01/2021	Call out DH went to reset VFD and discovered motor starter overload breaker tripped he reset I joined him and reset panel. This happened a few more times called Dieter and Randy for help Randy took phase current and voltage readings one phase seemed low! BC hydro was doing maintenance and overload continued to trip until they had finished! Had I known the fault was with BC hydro I could have turned power off and run generator! Note there was a power cut due to blown transformer at Mac's the night before Priced out replacement motor starter with overload protection as spare
15/01/2021	Contact James Bast CVRD re updating our Fire protection area map due to Phase 3 completion
18/01/2021	Give John Lowe orientation of pump house and generator as he has kindly offered to take over Generator maintenance from Dave Newman, Thanks John created Generator log/maintenance doc on G Drive
19/01/2021	Call out Low CL combination of low flow/low mixing and depleting solution strength bumped % of CL output up 2% Connected with Gord re full load test aiming for mid Feb Met with MM re PLC program logic, to present to Kyle re update to program



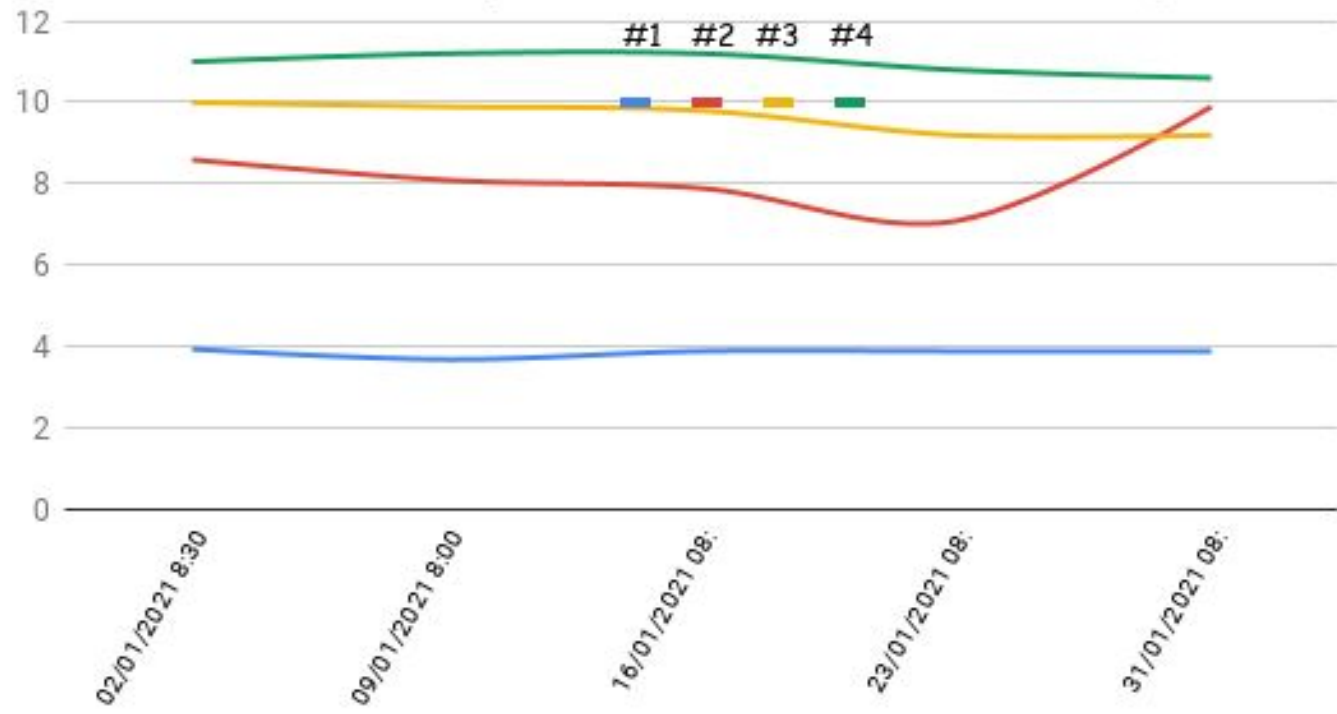
Jan 2021 Flow LPM x 10 & Amps



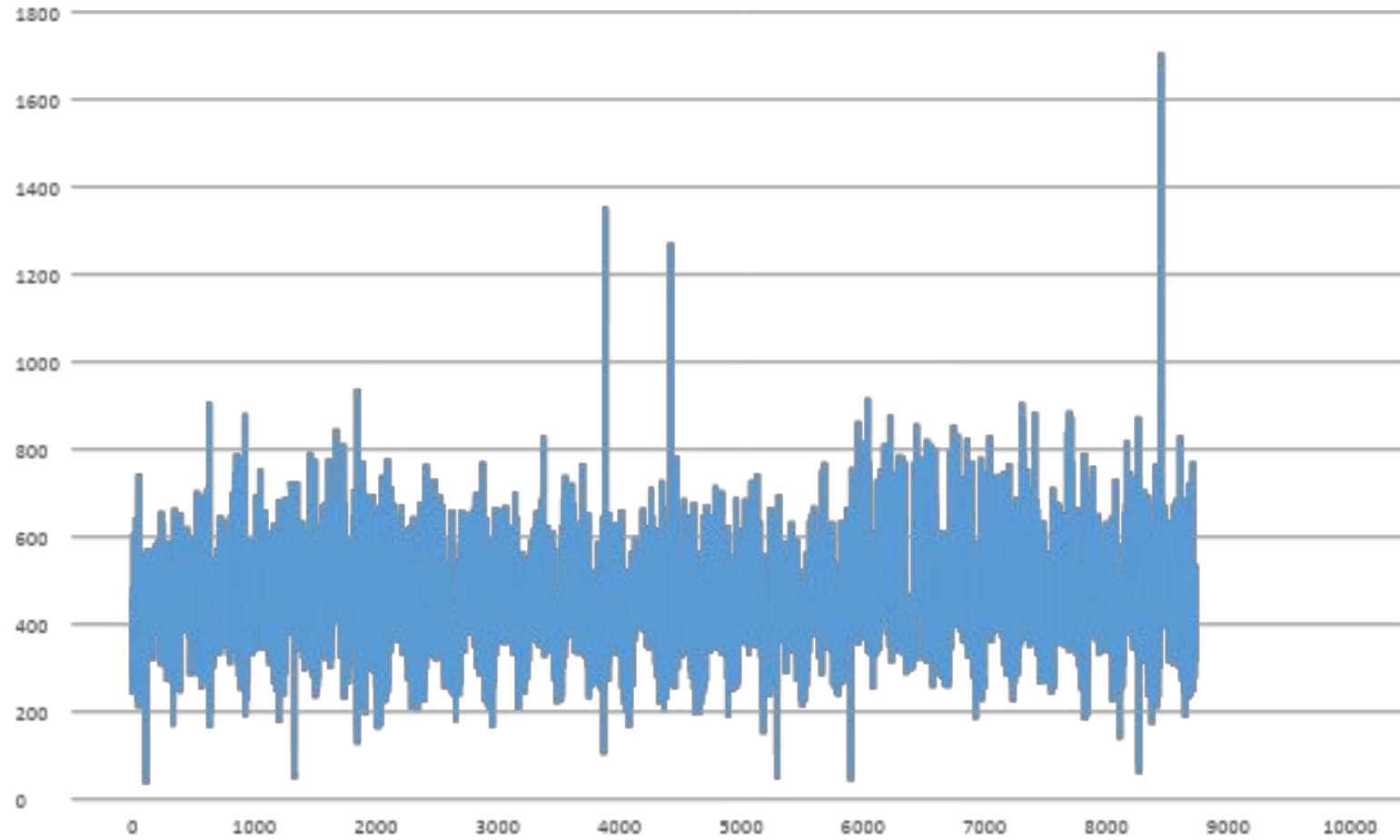
Jan 2021 well levels M x 10



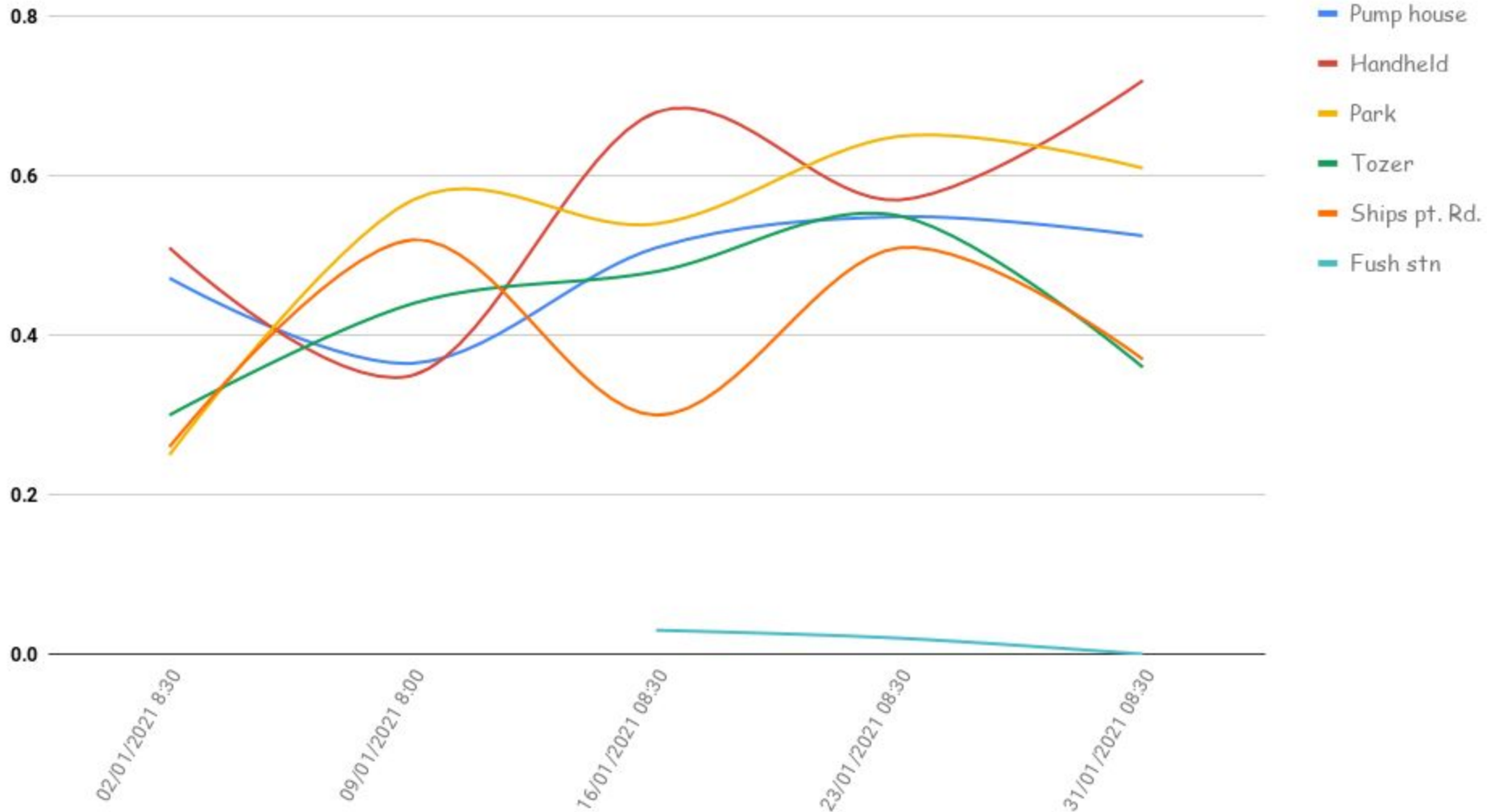
2021 Spid Well Levels Meters Weekly

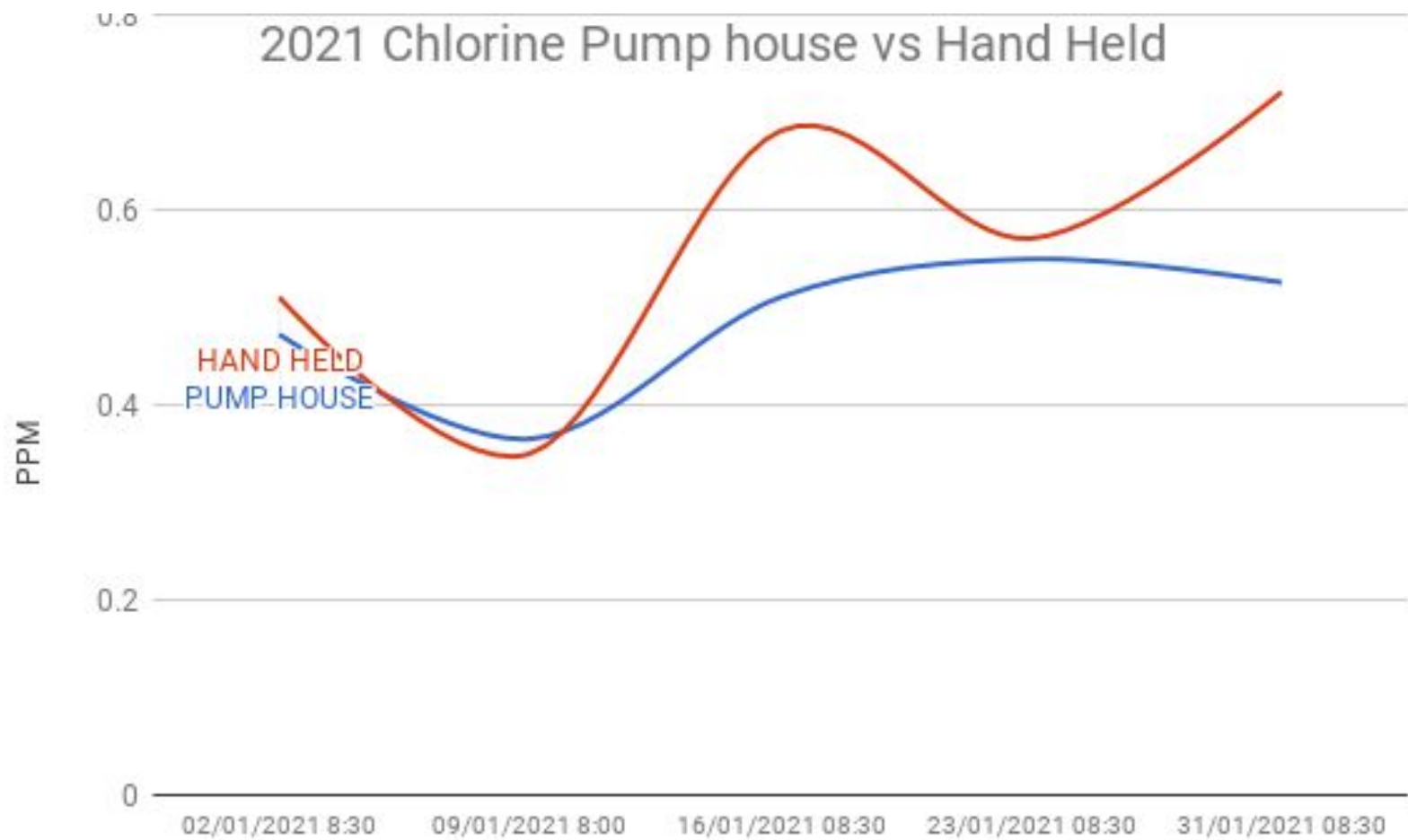


Jan 2021 Chlorine Pumphouse PPM x 100



2021 Residual Chlorine weekly testing PPM (parts per million)





Jan 2021 Discharge Pressure PSI

