

Water Operator Report Oct 2020

Prepared by: Dave Shepherd



SHIPS POINT IMPROVEMENT DISTRICT

Water consumption

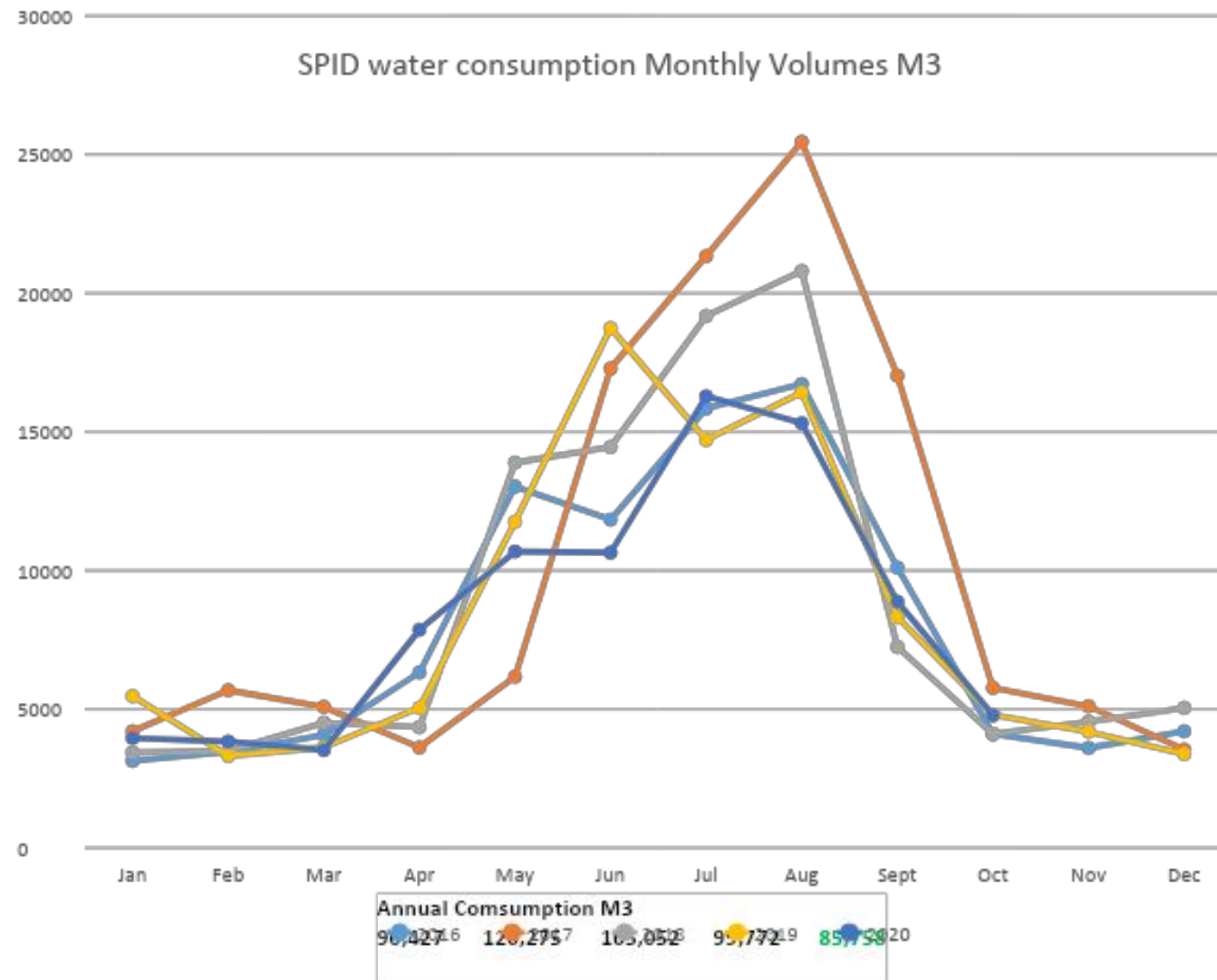
Monthly Consumption	4781 M ³	28	170.75 M ³	Daily Average
Previous year 2019-10	4796 M ³	28	171.29 M ³	Daily Average
			-0.31%	
Vol Well #1 since 19 Jan 2019	102.19 M ³			
Max Flow for month	1193.5 L/Min	Min Flow for month	4.9 L/Min (leak rate)	
Time and Date	2020-13-10 10:50:00		2020-25-10 02:03:00	
Pump hours	# 2 627	# 3 1	#4 58	
Previous month hrs	346		11	337

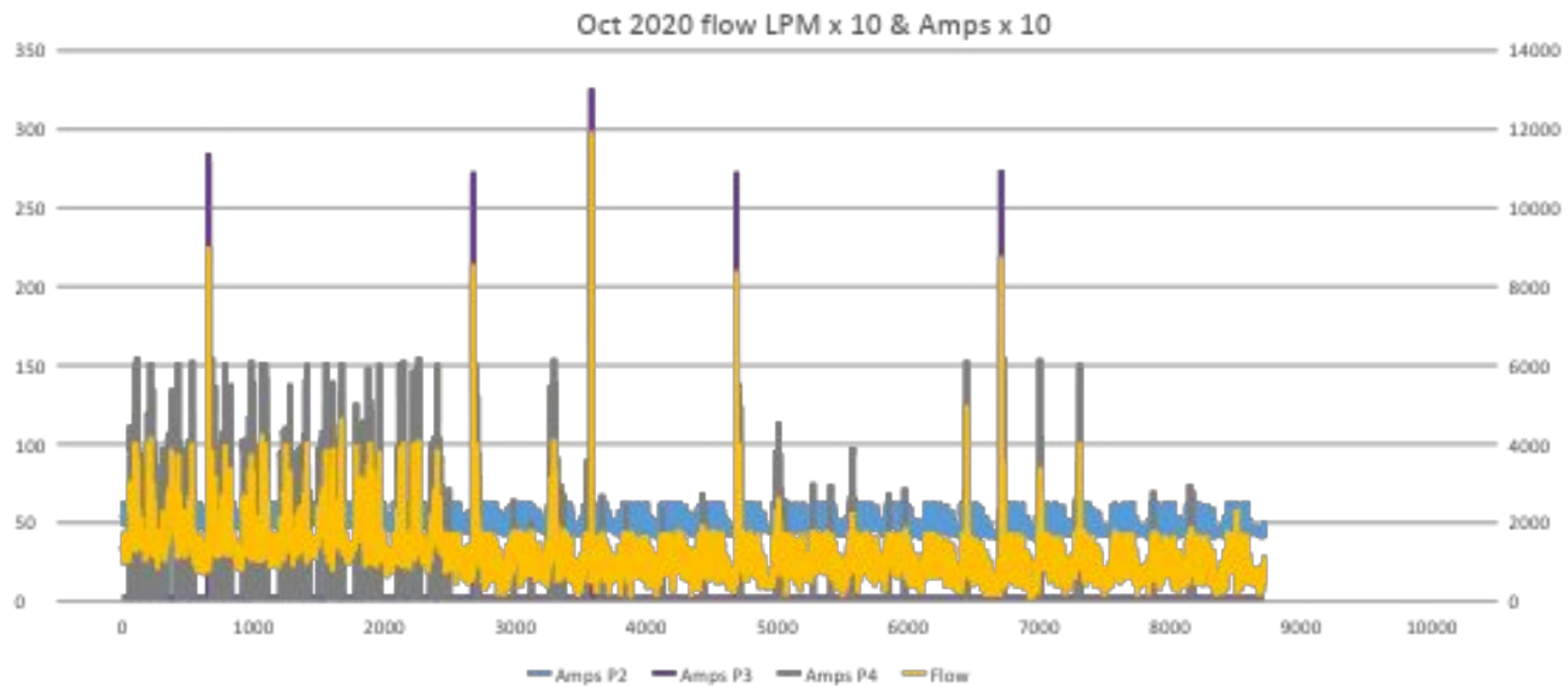
Samples

Activity	Date	Location	Sample type	Result	
Monthly	13/10/2020	7941 Park	Drinking water	✓	Sent to VIHA
Sample /testing		7588 Ships Pt.	Drinking water	✓	
		7576 Tozer	Drinking water	✓	
		Well 2	Raw	✓	
		Well 3	Raw	✓	
		Well 4	Raw	✓	

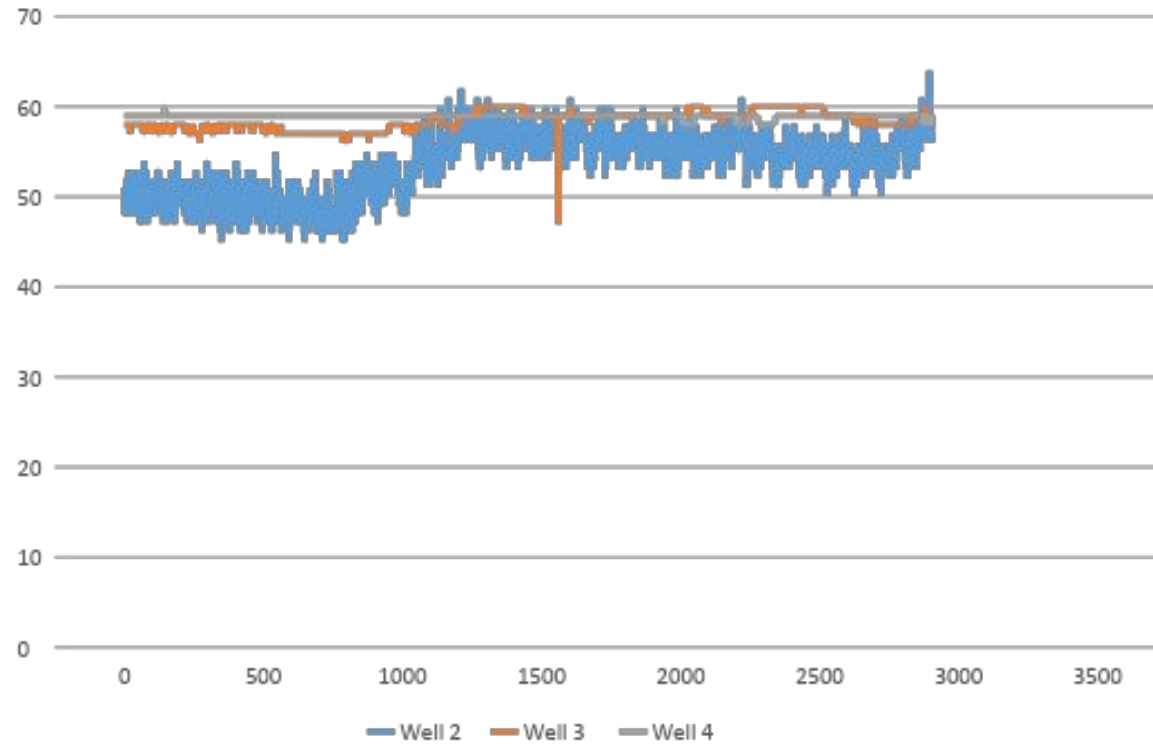
Operations/Maintenance

	Weekly Meter readings, CL residuals, run pump 1 collect well levels data
	Monthly Data/report, replace CL membrane, VIHA samples add & order chlorine
03/10/2020	Monitor Pump #4 VFD fq. As Flushing station comes on (60hz at 490) pressure dropping
07/10/2020	Comox valley sewer and water meeting
13/10/2020	Pump house callout "general alarm" after power bump NFF
20/10/2020	Work on new and old CL skids prep for switch over
21/10/2020	Bring new skid up to operating pressure 80psi (offline)
22/10/2020	Flush new skid with water and then CL solution Off line. Plumb in and bring online
23/10/2020	Make stand alone 4:20 back up CL pump out of old pump and plumbing
	Empty cl tank and scrub clean remove and clean foot valve add to new system
	make shelf in shed for old skid and parts
29/10/2020	Adjust output flow of new pumps (aiming for .5ppm as slightly high at .7ppm)
	Remove old rechargeable batteries from HH radios and replace with AA's
30/10/2020	Test what happens with pump #4 switched off and ramp flow up from 50 LPM using hydrant
	Result: At 250 LPM #3 still had not kicked in and discharge pressure dropped to 50 PSI

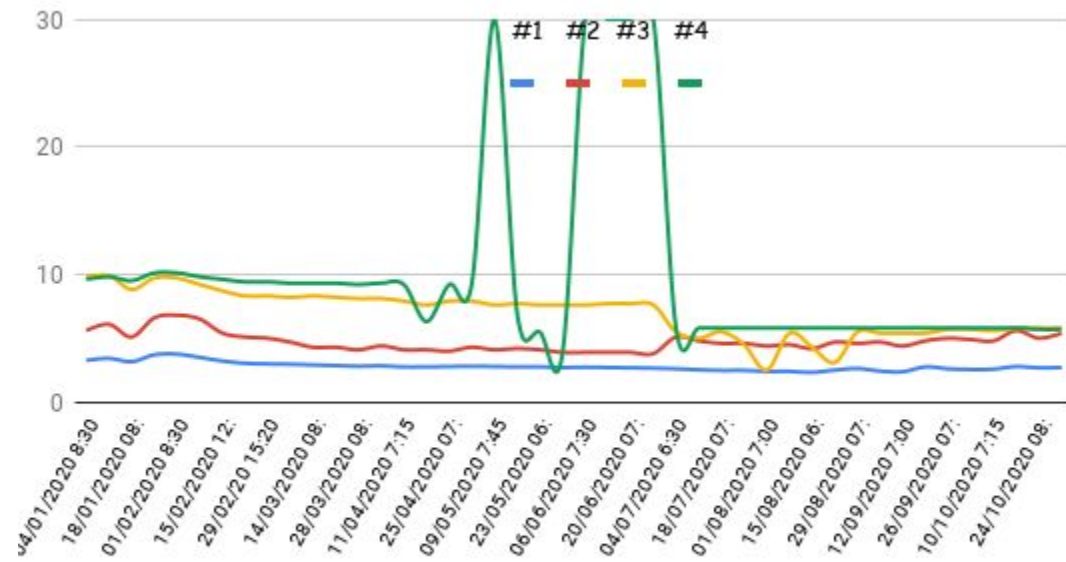




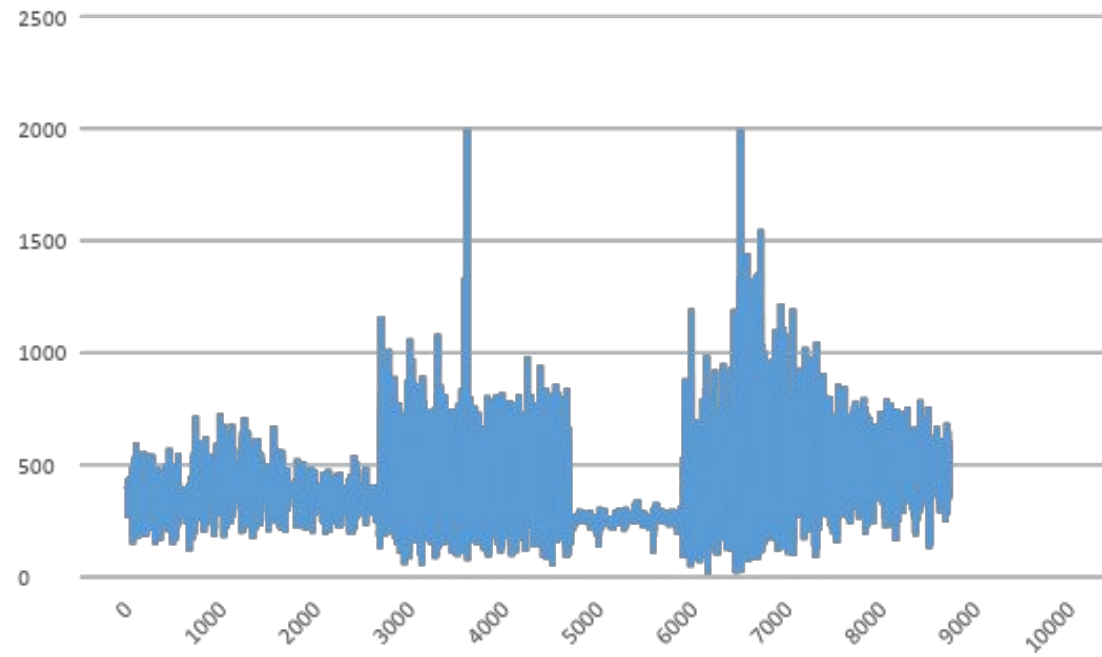
October 2020 well levels Mx10



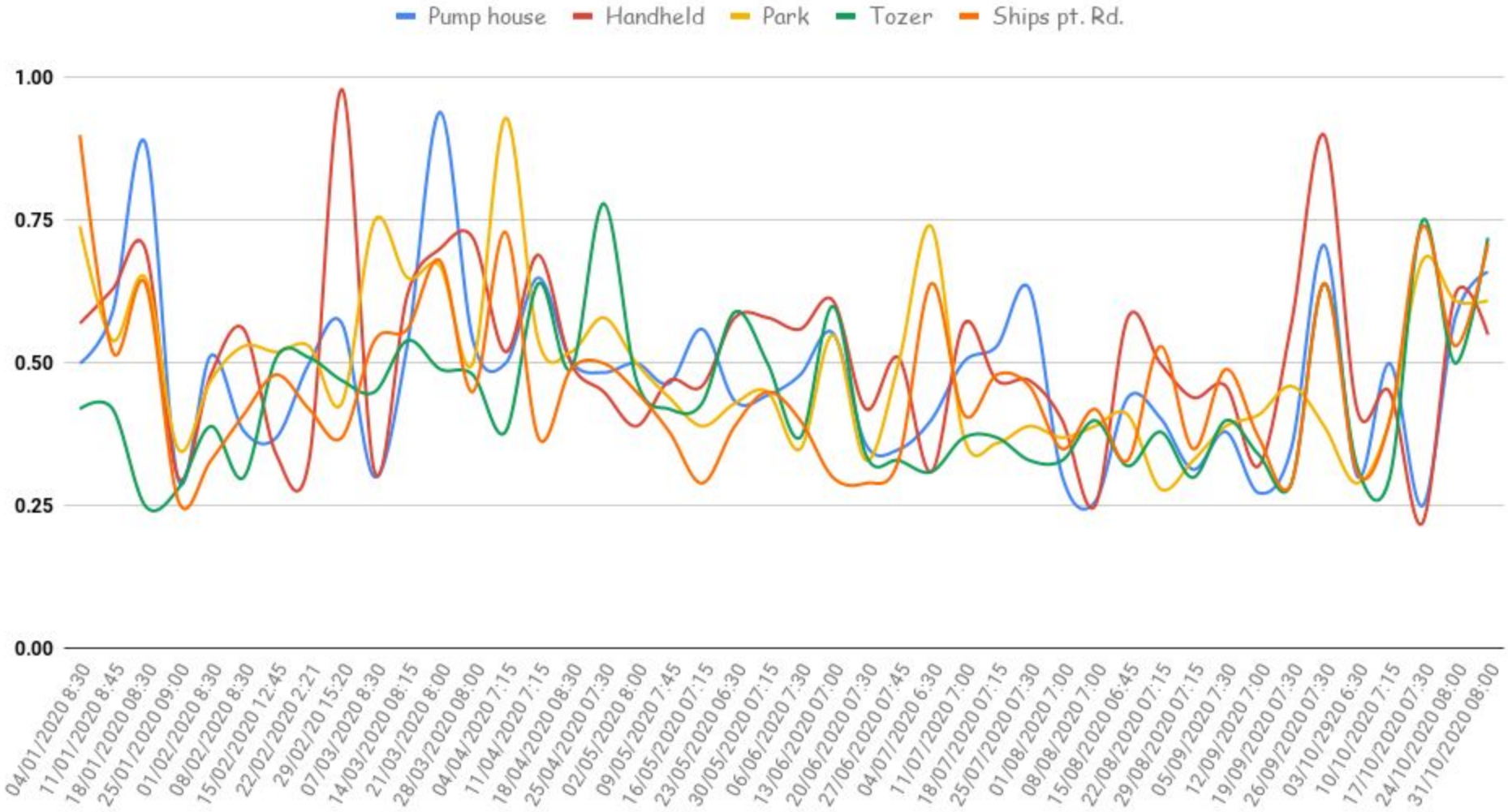
2020 Spid Well Levels Meters Weekly

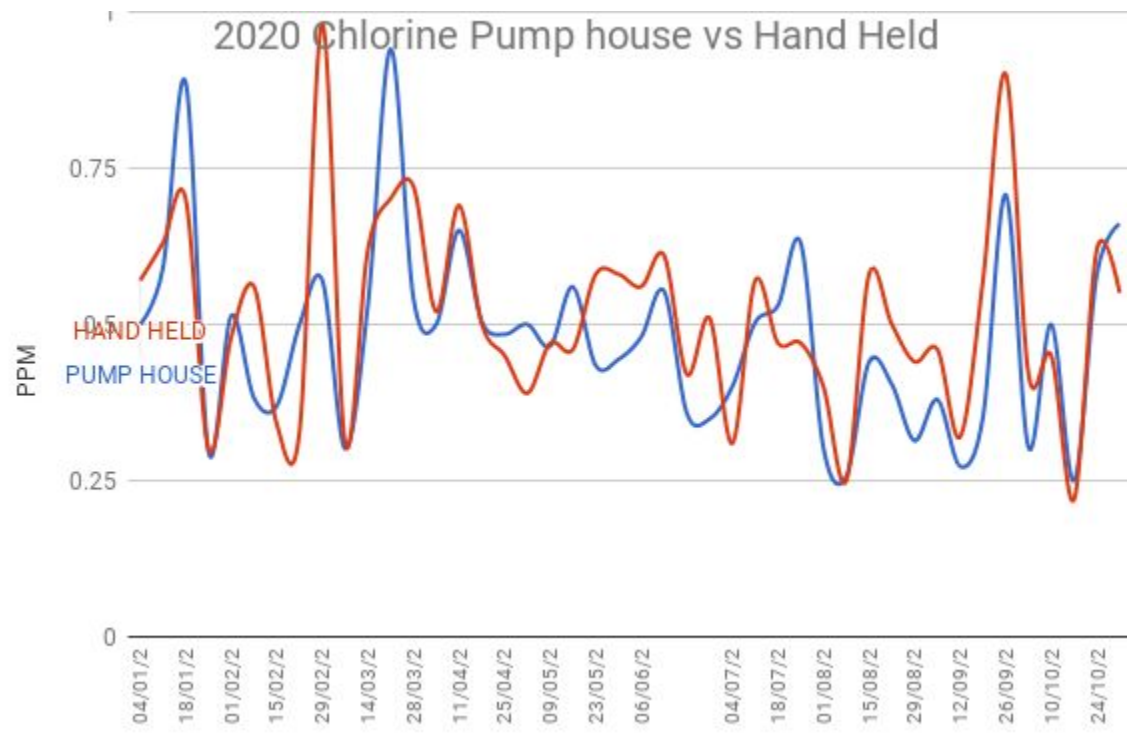


Oct 2020 Chlorine Pump House PPM x 1000



2020 Residual Chlorine weekly testing PPM (parts per million)





Oct 2020 Discharge pressure PSI

