

Water Operator Report Sept 2020

Prepared by: Dave Shepherd



SHIPS POINT IMPROVEMENT DISTRICT

Water consumption

Monthly Consumption	8876 M ³	28	317.00 M ³	Daily Average
Previous year 2019-09	8321 M ³	28	297.18 M ³	Daily Average
			6.67%	
Vol Well #1 since 19 Jan 2019	94.10 M ³			
Max Flow for month	1499.9 L/Min	Min Flow for month	13 L/Min	
Time and Date	2020-03-09 6:48		2020-24-09 23:47	
Pump hours	# 2 346	# 3 11	# 4 337	
Previous month hrs	# 2 70	# 3 38	# 4 575	

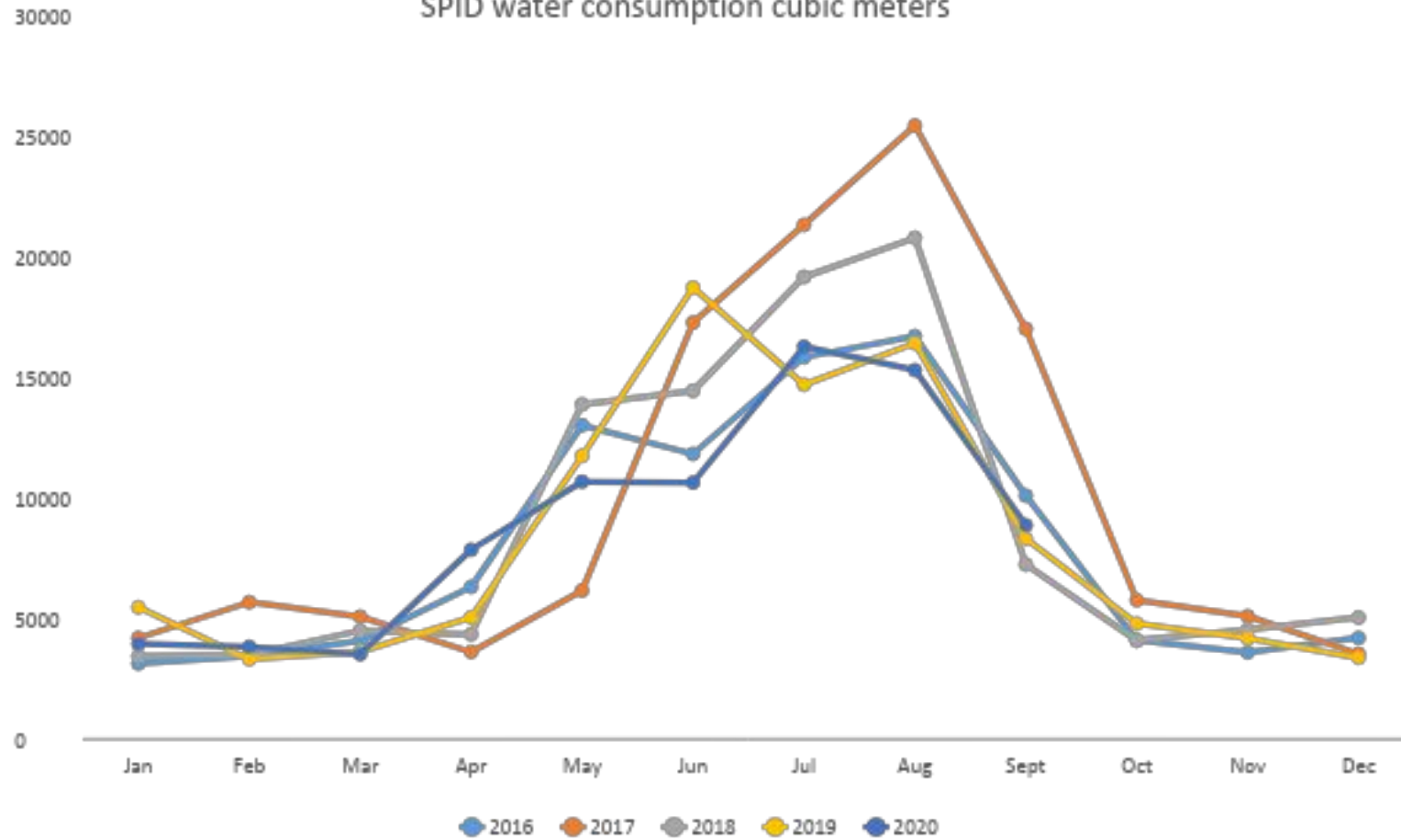
Samples

Activity	Date	Location	Sample type	Result	
Monthly	14/09/2020	7941 Park	Drinking water	✓	Sent to VIHA
Sample /testing		7588 Ships Pt.	Drinking water	✓	
		7576 Tozer	Drinking water	✓	
		Well 2	Raw	✓	
		Well 3	Raw	✓	
		Well 4	Raw	✓	

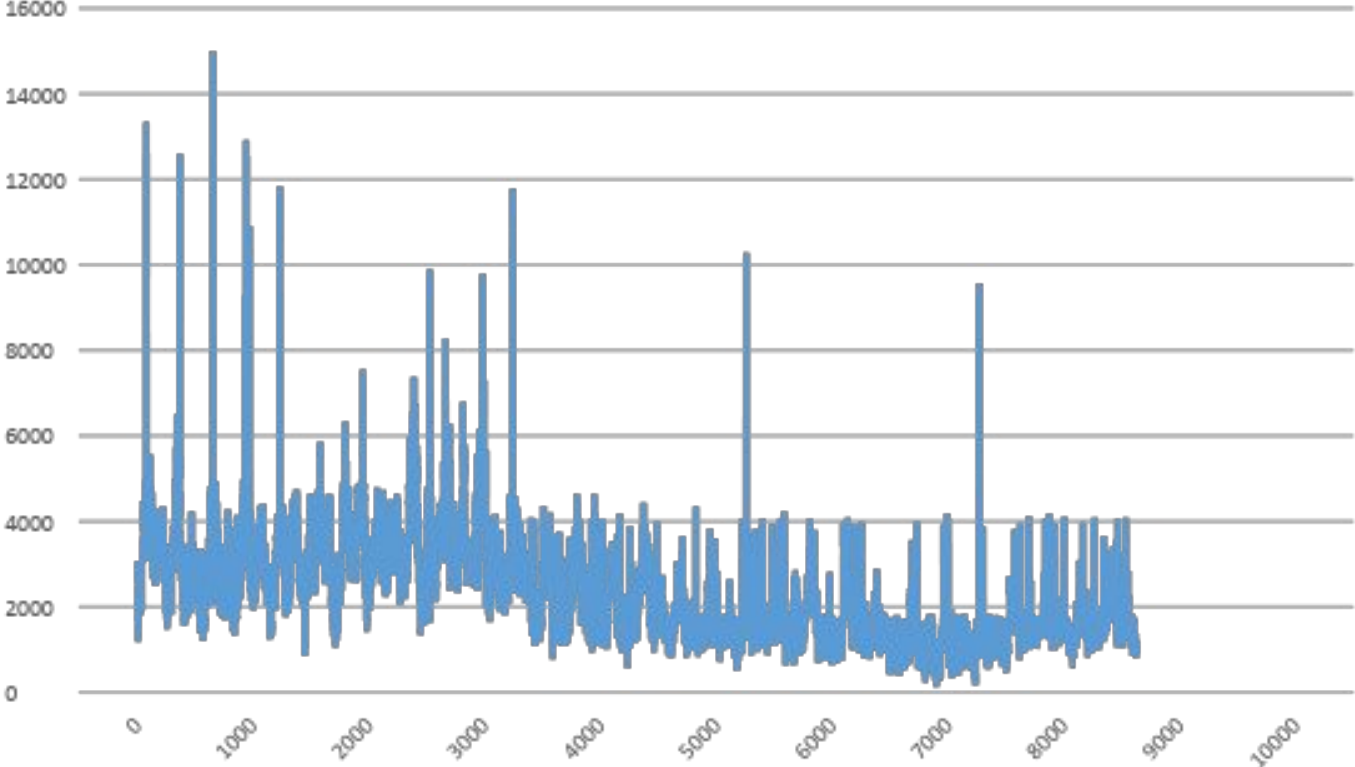
Operations/Maintenance

	Weekly Meter readings, CL samples, run pump 1 collect levels data
	Monthly Data collection/report, replace CL membrane, VIHA samples add & order chlorine
02.09.2020	Change peristaltic tube on CL pump #1 switch operations to CL #2 pump
08.09.2020	Obtain quote for #4 pump from Iconex and Trey Eletric,
15.09.2020	EOCP online conference
16.09.2020	EOCP online conference
21.09.2020	Call out 01:32! Low CL, top up tank with slightly higher dose, prime and switch to CL #1
23.09.2020	Repair small leak on CL #1 store main line valves from Phase 3 in shed
26.09.2020	low discharge Alarm due to flushing stn. System couldn't cope going from #2 to #3
	Plan A stager start on stn. Didn't work Plan B restrict outflow to 1.5" seeme tobe working

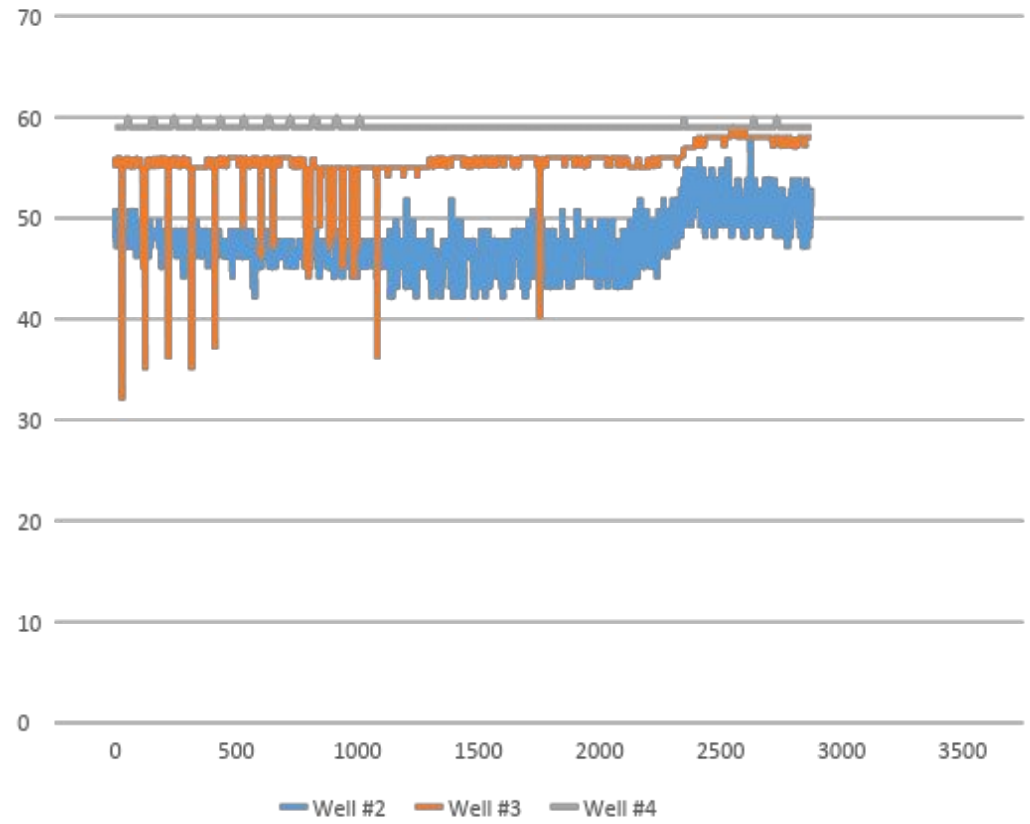
SPID water consumption cubic meters



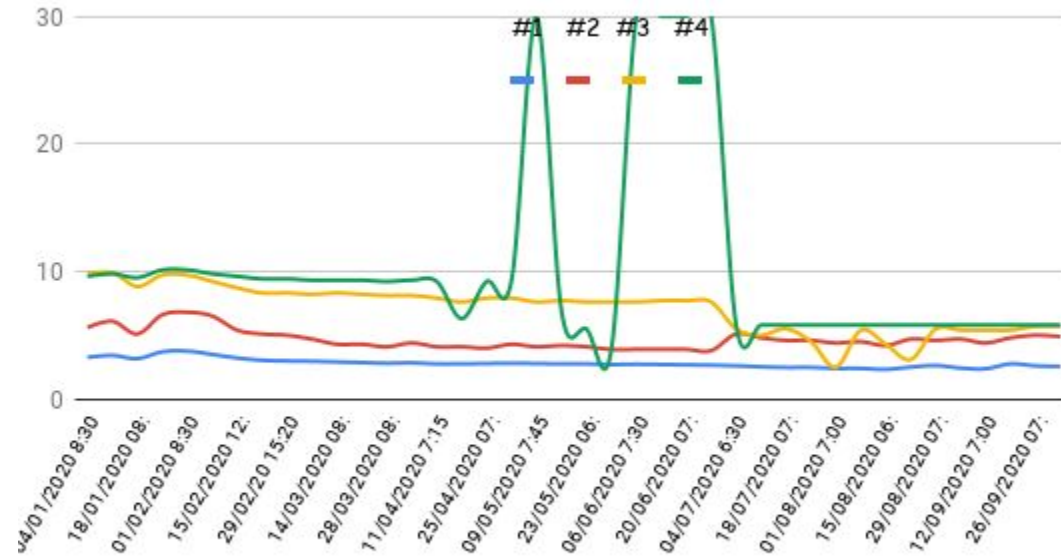
Sept 2020 flow LPM x 10



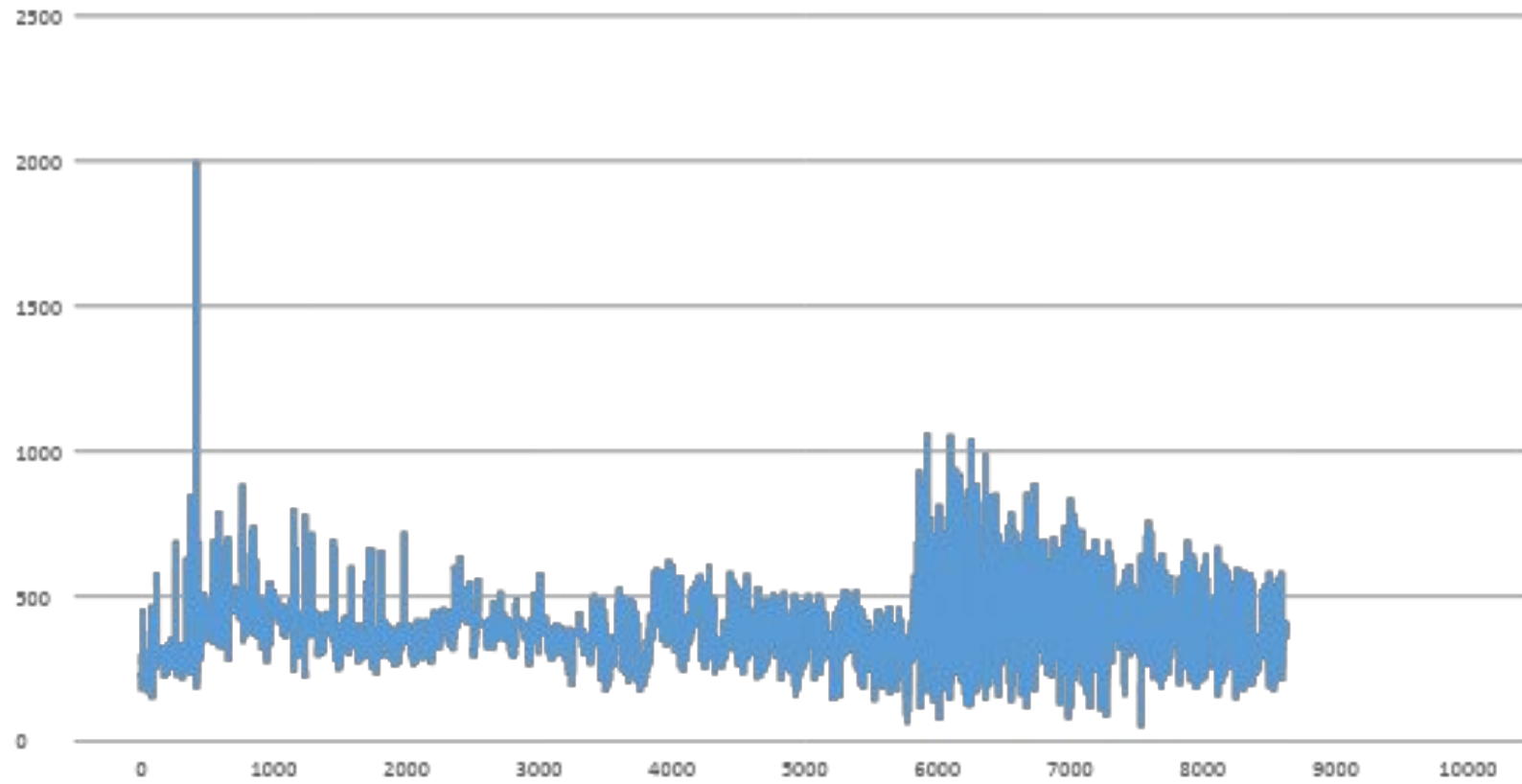
Sept 2020 Well Levels M x 10



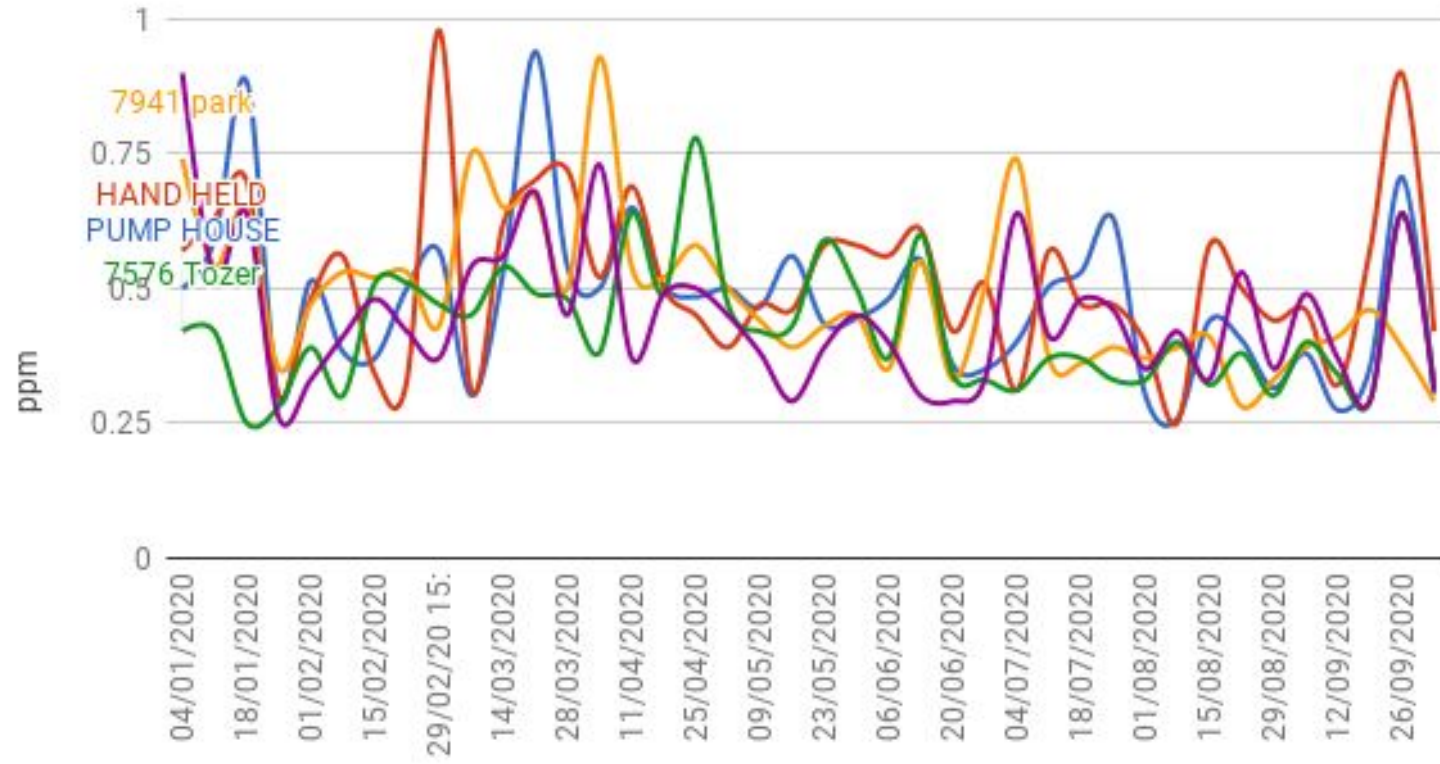
2020 Spid Well Levels Meters Weekly

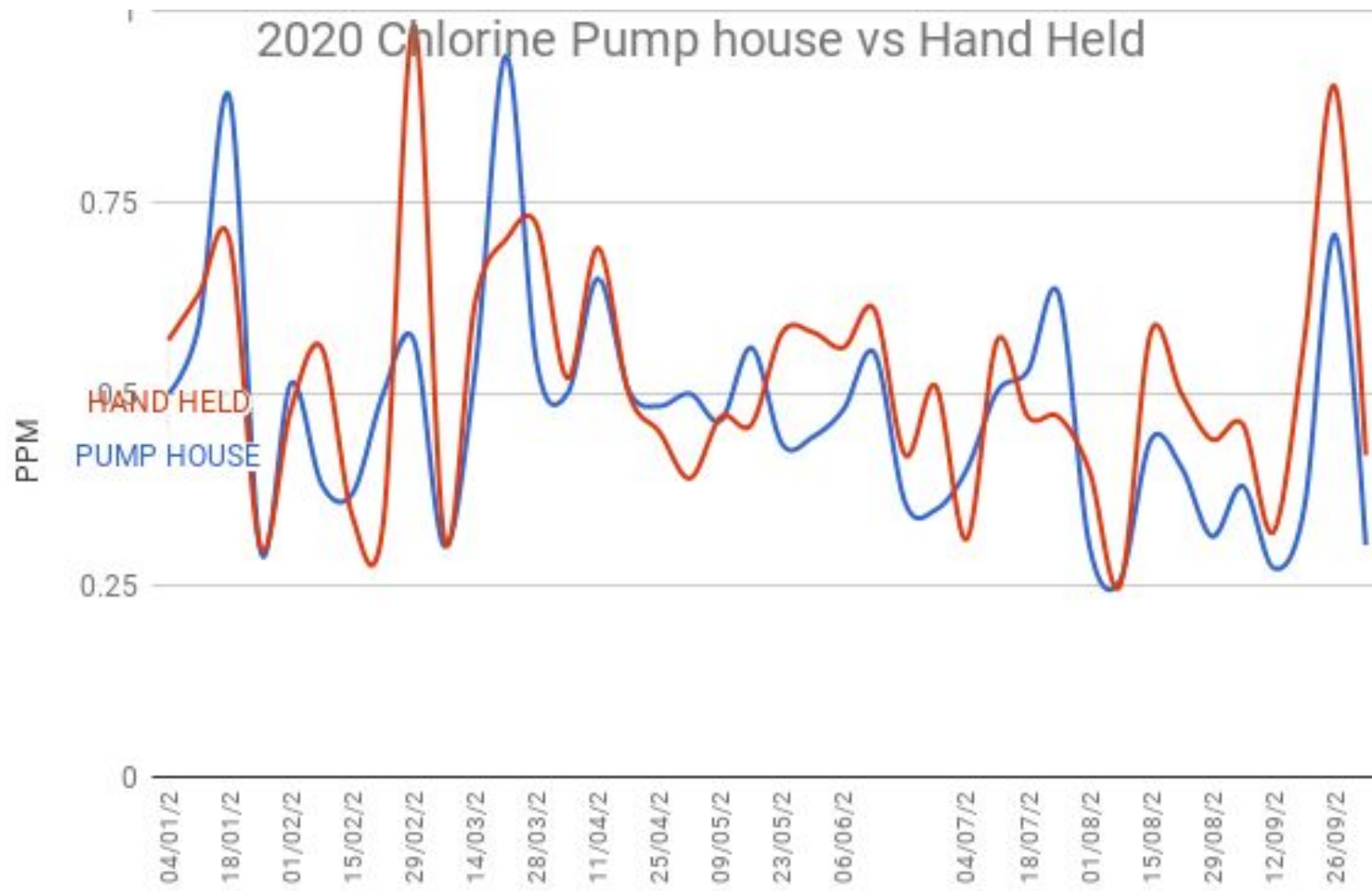


Sept2020 Pump House CL PPM x 1000



2020 WEEKLY CHLORINE SAMPLES





Discharge pressure PSI

